



Welcome to The Nest  
Eaton Square Prep & Nursery Schools

# Welcome

---

Welcome to Eaton Square – an exceptional group of co-educational Prep and Nursery Schools in a peaceful, leafy corner of London's Belgravia.

Following the success of our current Nursery Schools, we are delighted to be expanding our Early Years provision. It therefore gives me great pleasure to introduce you to our new Nursey School for 2-4 year olds, **The Nest**. It will be located on Lupus Street, just a short walk from our Prep School building on Eccleston Square.

We ignite a **passion for learning** within all pupils, exposing them to a broad curriculum which enables them to explore their individual talents and interests.

Our vibrant Nursery Schools feed into the thriving and flourishing Reception classes of our Prep School. This brings a feeling of **continuity, togetherness and family** into all areas of school life; and in doing so helps children feel safe and happy at all times – a goal we share with all parents.

Supporting this are our core values of **perseverance, ownership, integrity, service and empathy**, aptly remembered through the acronym 'POISE'. These values guide us in everything that we do.

The Nest will mirror the Early Years excellence on offer in our existing Nursery Schools.

I hope you enjoy the information provided in the coming pages and look forward to meeting you in person.

With best wishes,

Trish Watt  
Headmistress





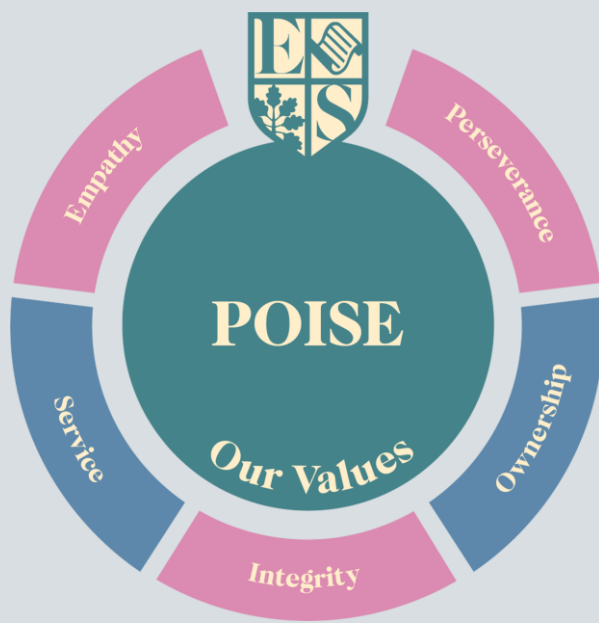
**Mrs Trish Watt**  
Headmistress



**Mr Sebastian Hepher**  
Principal



**Miss Isabel Mouzo**  
Head of Early Years



# Our Early Years Curriculum

---



You can view our full EYFS Curriculum Policy [here](#)

# What To Expect

---

Days filled with fun, **friendship and learning** through both child-initiated and adult-led activities.

A design which champions **learning through play**, nurturing children's maths skills, gross and fine motor skills, phonics and an understanding of both space and shape.

The same exceptional, **child-focused ethos** that runs through all Eaton Square Nursery Schools.



Phonics, French, Ballet, Swimming, Music, Games, Circle Time, outdoor play time and more – all in the care of **the very best Early Years professionals**.

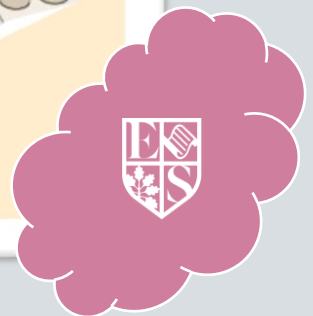
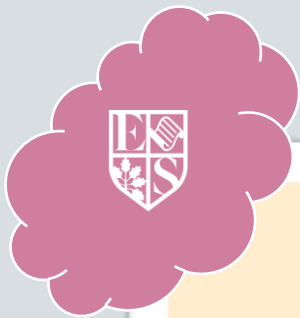
**Priority admission** into Reception at Eaton Square Prep School.

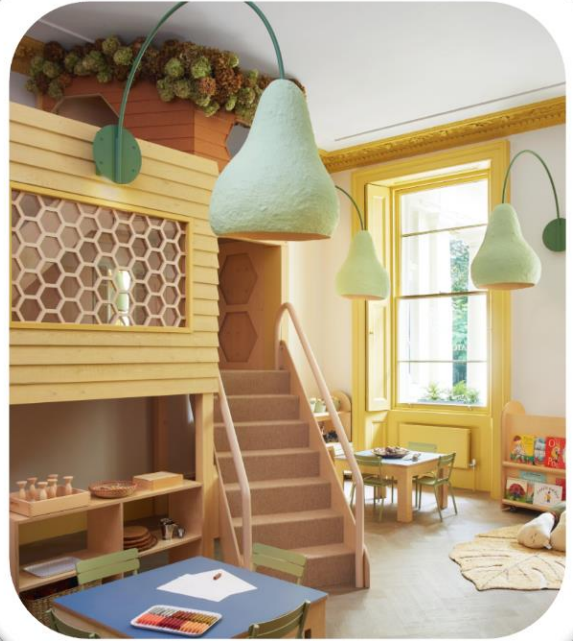


# Design

---

The Nest will enjoy the same  
**fun yet calm,**  
**energizing yet nurturing**  
design found in all existing  
Eaton Square Nursery Schools.





# Key Information

---

The Nest will be home to a Pre-Nursery (for 2-3 year olds) and Nursery (for 3-4 year olds).

All places start in September and run for one academic year (September – July). Like all Eaton Square Nursery Schools, The Nest will be open during **term time only**. If you would like to find out more information about our term dates, please visit our website [here](#).



## Pre Nursery

Children start **Pre Nursery** in the September after they turn 2. They can either attend for five full days (8.30am-3.30pm) or five mornings (8.30am-12.30pm).

## Nursery

Children start Nursery in the **September** after they turn 3. They attend **five full days** (8.30am-3.30pm)

## Reception

All Nursery children are offered priority admission into Eaton Square Prep School.



# A Typical Week

Every day at The Nest will be special. This is reflected in our stimulating and varied schedule, which covers all the elements of the Early Years Curriculum.

8.30-9.00	Settling In / Self Register
9.00-9.15	Circle Time
9.15-10.20	Activities (adult-led & child-initiated)
10.20-11.50	Snack & Outdoor Play
11.50-12.15	Activities (adult-led & child-initiated)
12.15-13.30	Lunch, Story & Rest
13.30-14.00	Play time
14.00-15.00	Each day changes between: Phonics French Games Ballet Swimming (Nursery only)
15.00-15.30	Story Time, Tidy Up & Dismiss



“David’s favourite time of the day is when Miss Isabel reads to the class.”



# Praise for Eaton Square Nursery Schools:

---

"I am delighted to be able to support the launch of Eaton Square's Nursery School. It is a special place that promises to support and nurture some of the newest generation, all in a way that builds care and empathy for both people and the planet"

– **Anya Hindmarch CBE**

"A safe, happy and nurturing learning environment; where each child is given every possible opportunity to thrive."



"Educational enjoyment is guaranteed"



"The entire design is carefully created to develop maths skills, fine motor skills, phonics and an understanding of both space and shape"



"Outstanding design where learning through play is a priority"



*"I am very lucky to have chosen Eaton Square for my children. All the parents I know think it is an open-minded school, accepting and embracing different nationalities and cultures, and the most important thing is, the school is patient with all the children and very good at teaching them.*

*Children are really having fun at school. All these praises are inseparable from the school's educational philosophy and the dedication of the teachers."*

- **Parent of ES Nursery Child**



*"Eaton Square School has provided our daughter with the supportive encouragement to develop her creativity and her voice. The teachers are very thoughtful about the range of activities they organise and she enjoys them all! The teachers have also given her the opportunity to build her maturity and confidence to perform in front of peers and parents.*

*She joined the nursery as a quiet child and, thanks to their nurturing, she has blossomed to delight in performing. We are grateful to Eaton Square for the thoughtful, rigorous, personal approach they take to developing each child."*

- **Parent of ES Nursery Child**

# How To Find Us

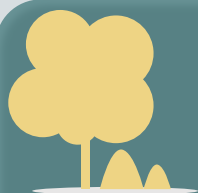
The Nest is located just moments from Eaton Square Prep School, Victoria Station and Pimlico Underground.



Scan me to  
arrange a  
visit!

## Eaton Square Prep School

Also home to *The Greenhouse*,  
*Treetop* and *Beehive Nursery Schools*  
55-57 Eccleston Square, London SW1V 1PH



## Eaton Square Nursery School: The Nest

32a Lupus Street, London SW1V 3DZ



# How To Apply

---

To register for The Nest's Pre Nursery or Nursery please complete the online Registration Form [here](#) and pay the £100 Registration Fee.

Registrations can be taken from birth and it is recommended to register as soon as possible as spaces are limited.

Once we have received your registration, we will email you an Official Offer of the Nursery Place. This will outline all requirements and Terms and Conditions for accepting this place.

Confirmation of a place will follow once the offer acceptance requirements have been met.

Fees include lunch and snacks and will follow the same structure as existing Eaton Square Nursery Schools. Current fees can be viewed [here](#) and are subject to slight variation from September 2023.

We offer the government universal 15 hour funding, which provides 3 and 4 year olds with funding for 15 hours per week of a nursery education. Children are eligible for this from the term after they turn 3.



Scan me  
to apply!



# Frequently Asked Questions

---

## What is the staff to pupil ratio?

In the Pre Nursery we have 1 staff member for every 4 children; in the Nursery it is 1 for every 8 children.

## Does my child have to be potty trained?

We request that children in the Nursery are toilet-trained, but those in the Pre-Nursery do not need to be.

## When and where do the children go outside?

The children will visit the local parks and outdoor spaces each day. We also have indoor and outdoor gardens that the children can explore throughout the day.

## What should my child wear and bring to Nursery?

Children wear the Eaton Square Nursery Uniform, which can be purchased online or in-person from our PTA-run Pre-Loved Shop. Children should wear their uniform during all Nursery hours. Your child will also receive an Eaton Square Nursery bag, complete with book-bag, cap and smock. They do not need to bring anything else to school, unless specifically requested on particular days.





### Is there a nap time?

Children with full day Pre-Nursery places will be offered a nap time.

### How will my child's progress be communicated?

From their learning and development to friendships and interests, we know that, as parents, you want to know your child's progress at every stage. We keep you fully informed through **Tapestry**, an online programme which provides an individual learning journey for your child.

We also hold parents evenings, produce termly reports and our door is always open if you wish to meet with your child's teacher and/or Head of Early Years at any time.

### Are The Nest children involved with Eaton Square Prep School life?

Absolutely! They participate in School events such as Christmas performances, Sports Days and Easter Egg Parades. Like all ES Prep and Nursery children, The Nest children become members of one of our four School Houses: Belgrave, Lowndes, Chester or Eaton - a great way to foster team spirit across the age groups. Elder pupils from the Prep may also visit The Nest to support them in their reading and writing: a beneficial activity for all involved.

A key part of the final stages of Nursery life is preparation for Reception at Prep School, so we start familiarising the children with other aspects of Prep School life when it is appropriate.





Eaton Square  
Schools

[www.eatonsquareschools.com](http://www.eatonsquareschools.com)

For specific queries, please contact:  
[registrar@eatonsquareschools.com](mailto:registrar@eatonsquareschools.com) | +44 (0)207 225 3131